

### In this issue:

Headteacher's Letter  
School Uniform and School Start Time  
Cultures of the World with EYFS  
Museum of London Trip with Year 2  
Practising Timestables with Year 4  
A Successful Science Coffee Morning  
Fourth Place at Hackney's Tag Rugby Festival  
Coffee Mornings  
Attendance  
Key Dates

### Dear Parents and Carers,

Welcome back! We hope that you enjoyed the half term break. Thank you to all parents who supported children with the homework projects over the break. This will support children, particularly in the learning of new vocabulary. Each year group will have now started new topics in all subjects including science, art and humanities. Teachers are supporting children in knowing more and remembering more by making links to previous learning as new topics are started. Look out for the curriculum newsletter which was sent home in your child's book bag for an overview of the curriculum coverage in order for you to continue to talk about school learning at home. Next week we will also be undertaking Design and Technology Days which parents are invited to attend to support with the practical elements of product making.

This half term you will receive your child's termly report at parents' evening on Thursday 8th December 2022. This will give more information about achievements so far, as well as learning targets for the upcoming term. Letters inviting you to parents' evening along with details of the online booking system will be sent home in the coming two weeks. We are keen to make sure that all parents meet with class teachers and discuss their child's progress as well as take up the opportunity to look through their workbooks and celebrate their hard work, so if you are finding it difficult to make an appointment, please call the school office who will be happy to help you.

We work very hard to be a smart school where children can feel proud. An important part of this is our school uniform. As the weather gets colder please remember that children are expected to wear black school shoes and not boots as these are not safe when they are moving around the school and in the playground. If you would like your children to wear boots when travelling to and from school then they must also bring their school shoes to change into when they arrive. At different points in the day children may remove jumpers which can easily be misplaced in busy classrooms. As well as making sure all uniform has your child's full name, please can you also check that items belong to your child and has not been picked up by accident. We ask that any items which are not yours are returned to class and their rightful owners the next school day.

Mr Stephen O'Brien - Headteacher | Ms Rachel Davie - Executive Headteacher

### Reminder



**CHILDREN MUST COME TO SCHOOL IN FULL UNIFORM AND SMART BLACK SHOES!**



**SCHOOL STARTS AT 8:55AM AND LEARNING STARTS STRAIGHT AWAY. BE ON TIME AT FIVE TO NINE!**

### Colours and Cultures

During World Week, the children in EYFS looked at different cultures from around the world and learned how to locate their country of origin on a map. They also loved dressing up in their cultural attire to showcase their colourful heritage to their peers.



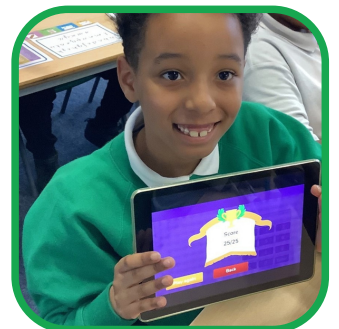
### Museum of London Trip

Year 2 went on a trip to the Museum of London where they visited the Great Fire of London exhibition. They saw many artefacts and models from the 1600s, including a realistic model of Saint Paul's Cathedral before it got burned down and a model of the oven where the fire first started.



### Timestables Practise

Year 4 have been using the Learn Emile app to test their times tables knowledge. They have been practising really hard in school and at home to ensure their scores improve. Some children have been receiving the maximum number of points. Well done, Year 4!





## Science Coffee Morning

A big thank you to all the parents and carers who came along to our hugely successful Science Coffee Morning where we were learning about exciting experiments to try at home.



## Tag Rugby Festival

Years 5 and 6 demonstrated a great sense of teamwork and sportsmanship during Hackney's Tag Rugby Festival at Mabley Green. They came fourth in the competition. Congratulations to everyone that took part.



## Key Dates

### AUTUMN (2) 2022

Parents' Evening:  
Thursday 8th December

Last Day of Autumn Term:  
Friday 16th December (SCHOOL CLOSSES 2PM)

Christmas Holiday:  
Monday 19th December - Monday 2nd January 2023

Staff Training Day (SCHOOL CLOSED):  
Tuesday 3rd January 2023

Children's Start Date:  
Wednesday 4th January 2023

### SPRING TERM 2023

Staff Training Day (SCHOOL CLOSED):  
Tuesday 3rd January 2023

Children's Start Date:  
Wednesday 4th January 2023

Work & Enterprise Week:  
Monday 23rd January - Friday 27th January 2023

Safer Internet Day:  
Thursday 9th February 2023

Half Term Holiday:  
Monday 13th February - Friday 17th February 2023

Children's Start Date:  
Monday 20th February 2023

World Book Day:  
Thursday 2nd March 2023

Parents' Evening:  
Thursday 23rd March 2023

End of Term Finish Date:  
Friday 31st March 2023 (SCHOOL CLOSSES at 2pm)

## Coffee Mornings

Parents/Carers are invited to drop into our sessions on various themes which are held in the Flexi Space at 9:15am on a Friday morning. These are an opportunity to meet with other parents as well as learn more about what the school does and get some practical tips on how to support your child with their learning from home.

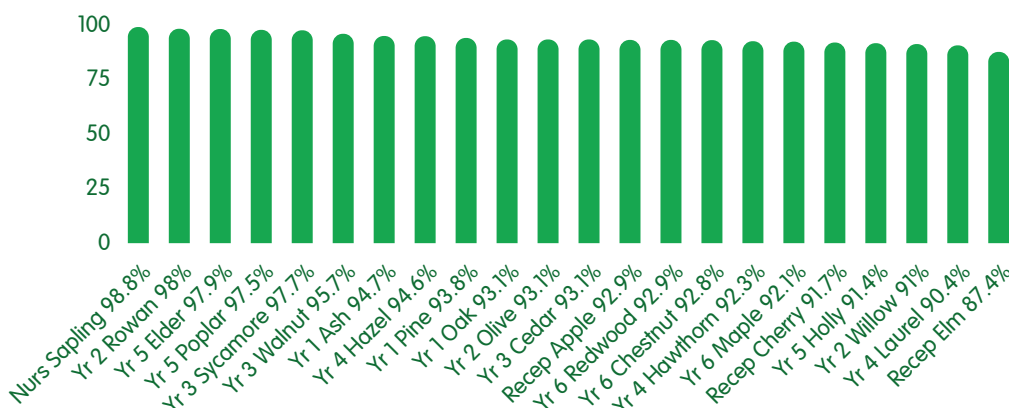
Date	Focus
Friday 11th November	<u>Anti-Bullying and behaviour</u> : What is the definition of bullying? What do I do if I think bullying is happening?
Friday 18th November	<u>Computing</u> : What apps does my child use in school?
Friday 25th November	<u>Wellbeing</u> : What does mental wellbeing mean and how do I speak to my child about this?
Friday 2nd December	<u>Eco</u> : How do we teach children about sustainability? (children can attend this coffee morning)
Friday 9th December	<u>Christmas Holiday Activities</u> : What activities can we try in the holidays and what local places can we visit? (children can attend this coffee morning)
EYFS Coffee Mornings	
Thursday 24th November	<u>Maths</u> : How can I develop my child's mathematical understanding at home?

## Attendance

Regular attendance at school promotes pupils' well-being, maximises progress in learning and helps pupils reach their potential. We are very proud of the achievements and progress of our pupils and are passionate about a child's right to an education. Attendance for all children is monitored weekly with the school seeking to work in partnership with parents to achieve above 97%.

Whole school attendance for the last week of Autumn Term 1 was 93.6%.

Well done to Nursery Sapling class, the weekly winners with 98.8%.



Orchard Primary School  
Holcroft Road  
London  
E9 7BB

020 8985 7785

@Primary\_Orchard

@orchardprimary

www.orchard.hackney.sch.uk

@orchard\_of\_imagination (EYFS)

Scan to order school uniform



Scan for Hackney's cost of living crisis guide

